

Spelling Common Exception Words

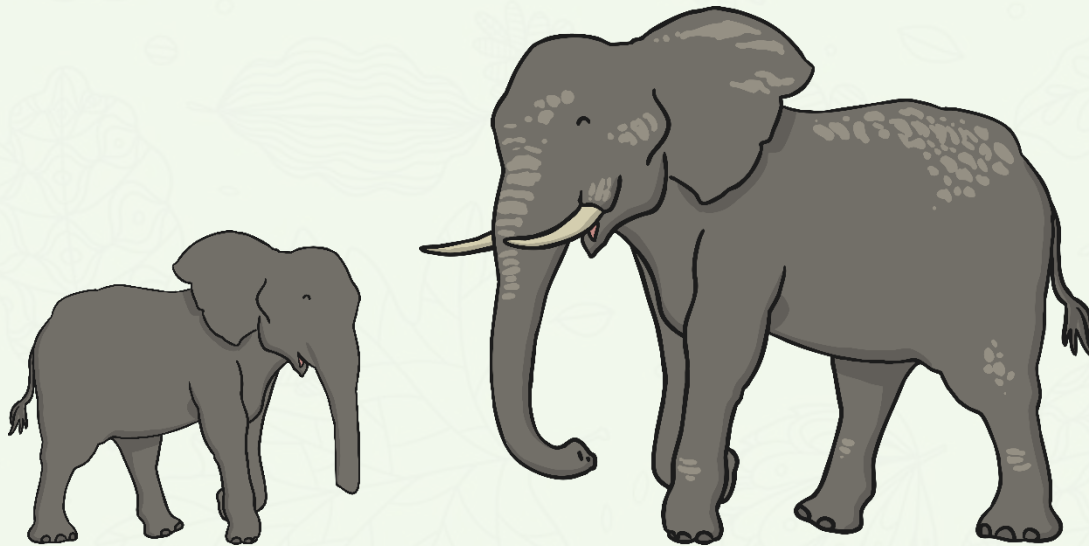


twinkl

A **mnemonic** is a way to help remember a tricky spelling.
It could be a saying that uses each letter in the word such as...

because

Big **E**lephants **C**an **A**lways **U**nderstand **S**mall **E**lephants



Or it could be a saying with the tricky word hidden inside the sentence, such as...

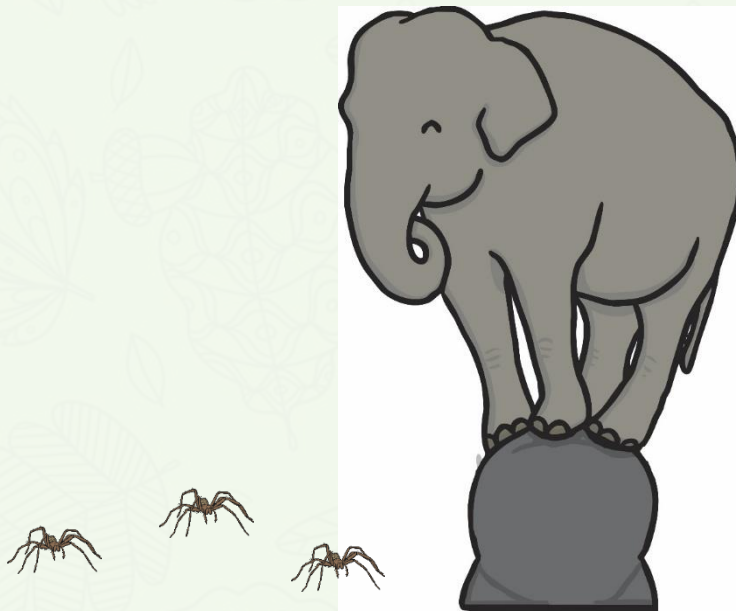
busy

Get a **bus** on a **busy** road



Can you work out how the mnemonic helps to spell these tricky words?

Put a real elephant next to spiders.



children

wild

again

most

parents

Can you work out how the mnemonic helps to spell these tricky words?

There's a lot to gain in trying again.



children

wild

again

most

parents

Can you work out how the mnemonic helps to spell these tricky words?

Most otters stand tall.



children

wild

again

most

parents

Can you work out how the mnemonic helps to spell these tricky words?

Wild insects love dancing.



children

wild

again

most

parents

Can you work out how the mnemonic helps to spell these tricky words?

There's always a child in children.



children

wild

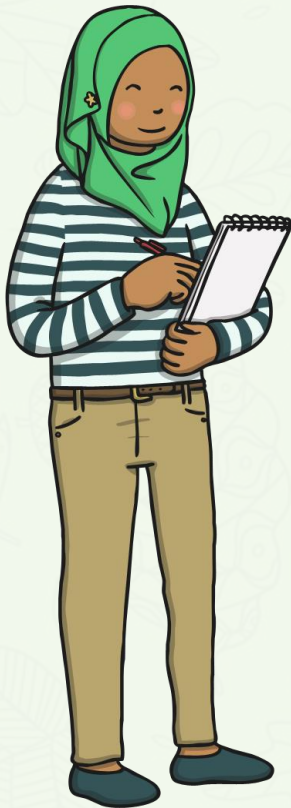
again

most

parents

Choose one of these tricky words to write a mnemonic for.
Draw a picture to go with it.

Can your friend work out which word the mnemonic is for?



door
floor
climb
only
both



Here are this week's spellings to practise.

door	climb
floor	parents
again	most
wild	only
children	both

Try hard to
learn them!



Try using a
mnemonic to
help you!

